

TURNBUTTONS

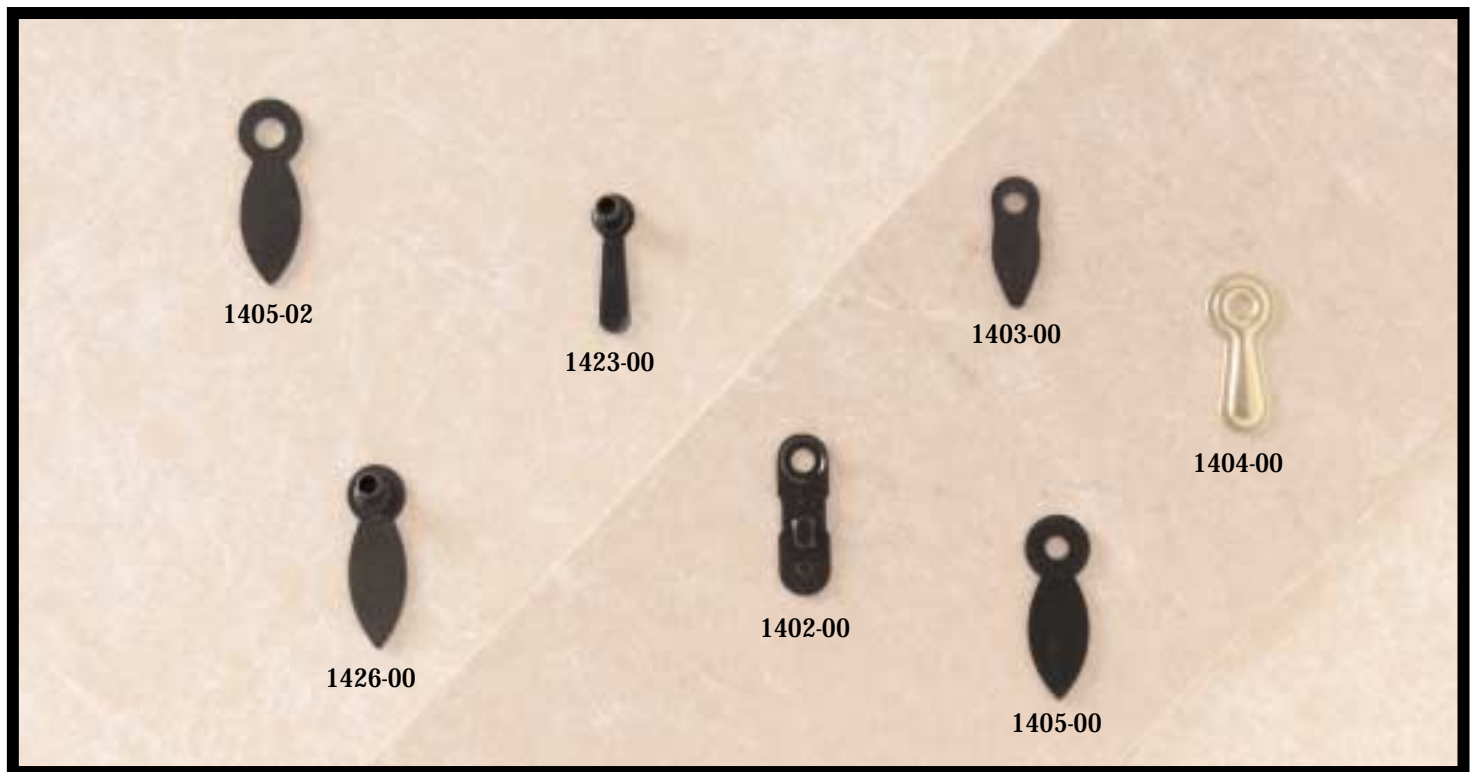


Craft Inc. supplies a variety of sized turnbuttons for the many sizes and shapes of picture frames.

We will work with you to select a finish which will compliment your frame backs for a subtle yet attractive addition.

Our self-fastening turnbuttons can be manually applied with our Champ machine.

We also offer our coil fed turnbutton that can be applied with our Coil-Fed Turnbutton Machine (CFTBM).



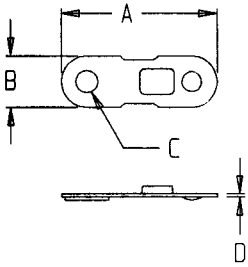
CRAFT INC.® “Pioneers in Self-Fastening Hardware”

1929 County Street • P.O. Box 3049 • South Attleboro, MA 02703-0912 USA • 1-800-8CRAFT8 ~ 508-761-7917 ~ Fax: 508-399-7240
[www: www.craft-inc.com](http://www.craft-inc.com) ~ [email: craft@craft-inc.com](mailto:craft@craft-inc.com)

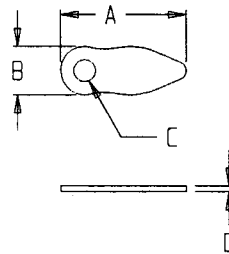
Product Specifications: Turnbuttons

1402-00

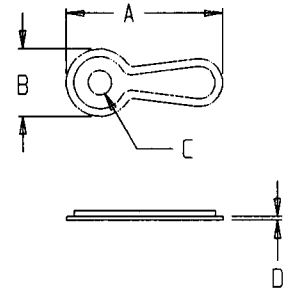
* PATENT PENDING
MAY BE AUTOMATICALLY
APPLIED BY CRAFT'S A.T.B.M.



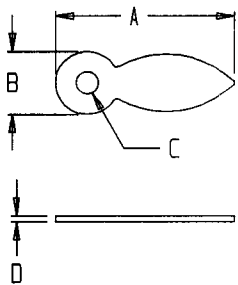
1403-02



1404-00

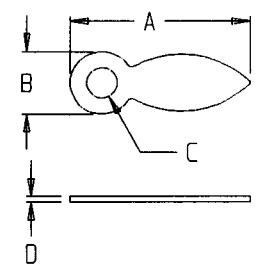


1405-00



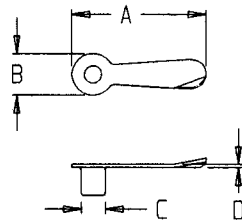
	A	B	C	D
1402-00	.815(20.70)	.270(6.86)	.115(2.92) 5/32(2.38) RIVET	.018(.46)
1403-02	.660(16.70)	.250(6.35)	.110(2.92) 3/32(2.38) RIVET	.030(.76)
1404-00	.815(20.70)	.350(8.89)	.125(3.30) 1/8(3.18) RIVET	.020(.51)
1405-00	.935(23.75)	.330(8.38)	.115(2.92) 3/32(2.38) RIVET	.032(.76)
1405-02	.935(23.75)	.330(8.38)	.160(4.06) 5/32(3.96) RIVET	.032(.76)

1405-02

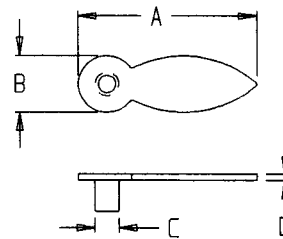


TOLERANCES AS FOLLOWS:
A, B & C = + -.005(.127)
D = + -.002(.050)

1423-00



1426-00



	A	B	C	D	BOARD THICKNESS	
					MIN.	MAX.
1423-00	.702(17.83)	.225(5.72)	.128(3.25)	.025(.64)	.040(1.02)	.100(2.54)
1426-00	.935(23.75)	.300(7.62)	.128(3.25)	.035(.76)	.050(1.27)	.130(3.30)

TOLERANCES AS FOLLOWS:
A, B & C = + -.005(.127)
D = + -.002(.050)

TURNBUTTONS ARE AVAILABLE IN A VARIETY
OF FINISHES OR SOLID BRASS



CRAFT INC.® “Pioneers in Self-Fastening Hardware”

1929 County Street • P.O. Box 3049 • South Attleboro, MA 02703-0912 USA • 1-800-8CRAFT8 ~ 508-761-7917 ~ Fax: 508-399-7240
www: www.craft-inc.com ~ email: craft@craft-inc.com